

TILE ROOF MOUNTING

1. SYSTEM OVERVIEW

LM-RH-S-S



The roof hook mounting system allows fixation of a rail system above the roof tiles to the sub structure below the tiles. This ensures a secure fixation system and minimises the impact on the roof tiles.

The roof hooks are optimised for the standard South African batten size as well as the more popular roman tiles in South Africa.

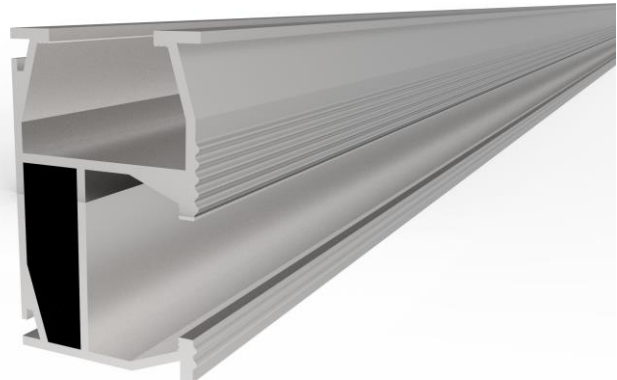
LM-IC35/40



LM-EC35/40



LM-R48-L

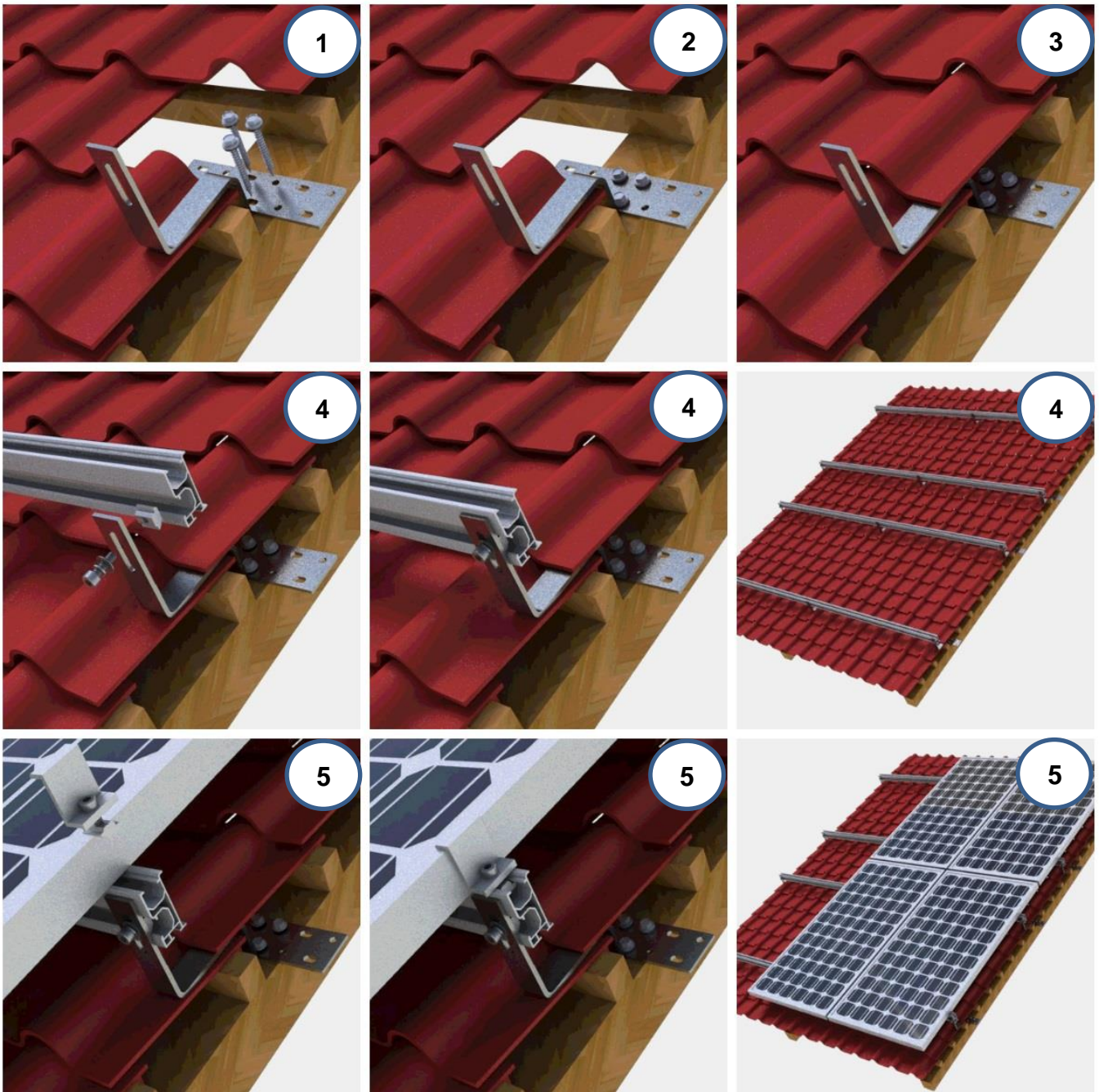


Standard aluminium rails and nuts complete the rail grid constituting the solar mounting structure.

Rails are aluminium 6063-T6, all brackets and module clamps are anodised aluminium 6005-T5, Roof hook and bolts are stainless steel SUS304. Wood screws are of a coated steel composition, although a stainless-steel screw is also acceptable.

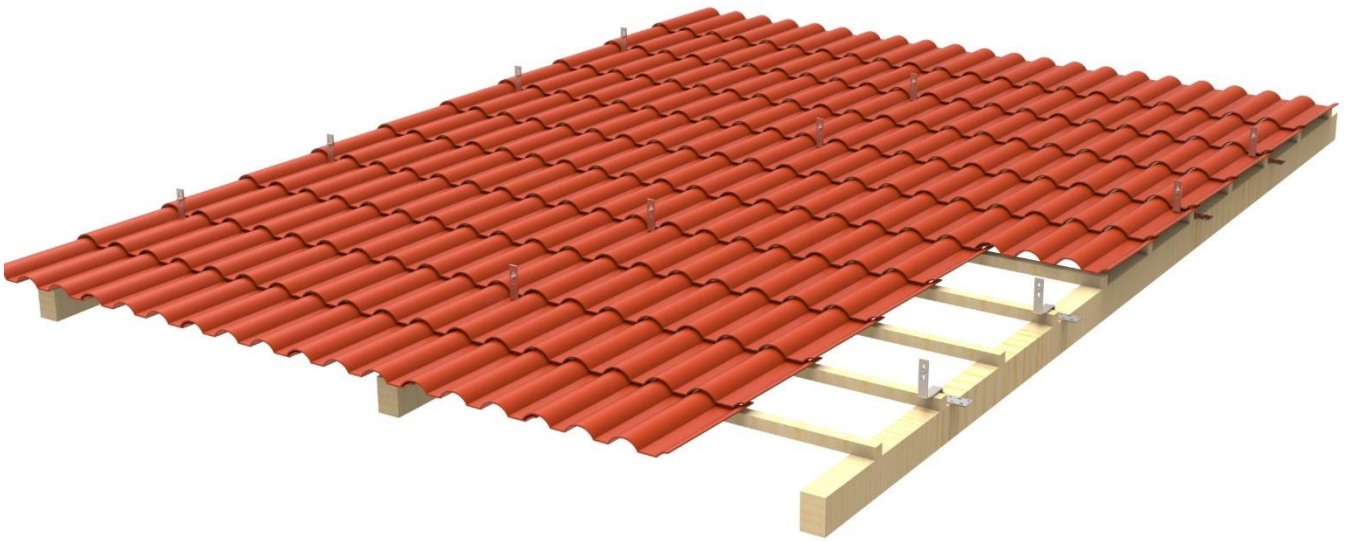
2. INSTALLATION STEPS

- 1) Determine the appropriate fixation points on the roof. Remove the appropriate roof tile to allow access to the roof sub-structure.
- 2) Align the roof hook with the sub-structure rafters / trusses or appropriate fixation structures. Fix the 2 supplied screws, to the rafter / truss. If the rafter allows, a 3rd screw may be used.
- 3) Replace roof tiles to its original position, some alteration to the roof tiles may be required to allow a good fit.
- 4) Attach the rails to the roof hooks with rail nuts supplied with the roof hook. The bolts can be torqued 15-17N.m. For horizontal spacing the recommended spans of 1.8m or lower. For longer span requirements and in higher wind areas consult with design engineers.
- 5) Choose vertical spacing of clamps according to the panel manufacturer's preferred clamping ranges. Lay PV modules into position working from 1 side, starting with LM-EC35/40 clamps on the end and LM-IC35/40 clamps in between modules. Module clamps should be tensioned considering the module OEM specification, but in general 12-14N.m.



3. INSTALLATION OVERVIEW

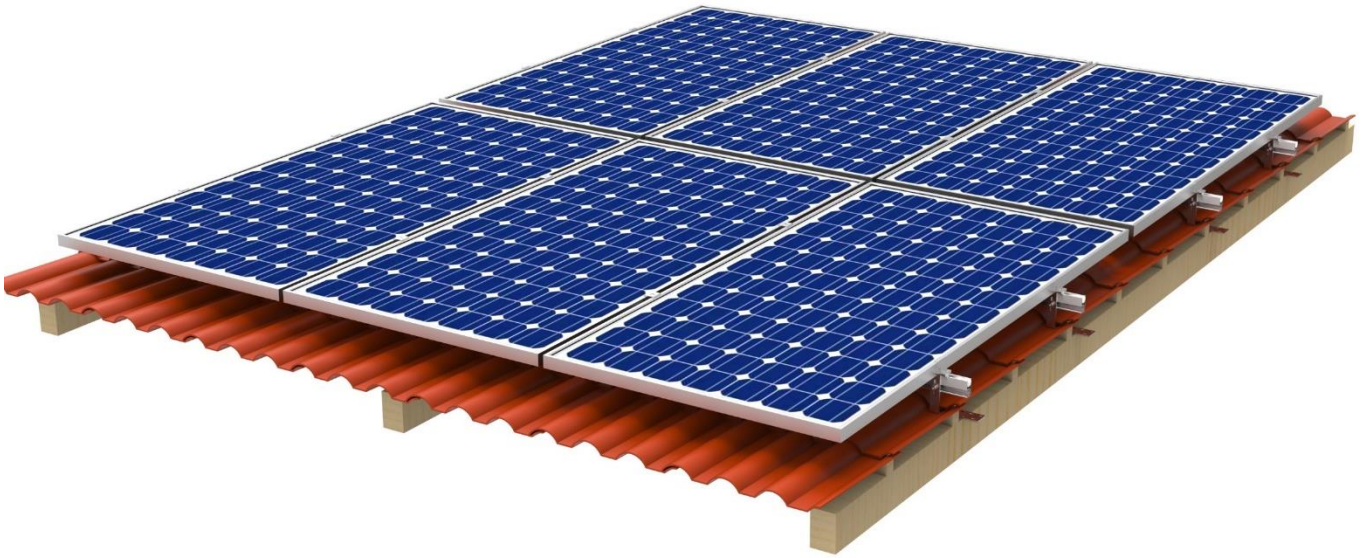
- 1) Install roof hooks



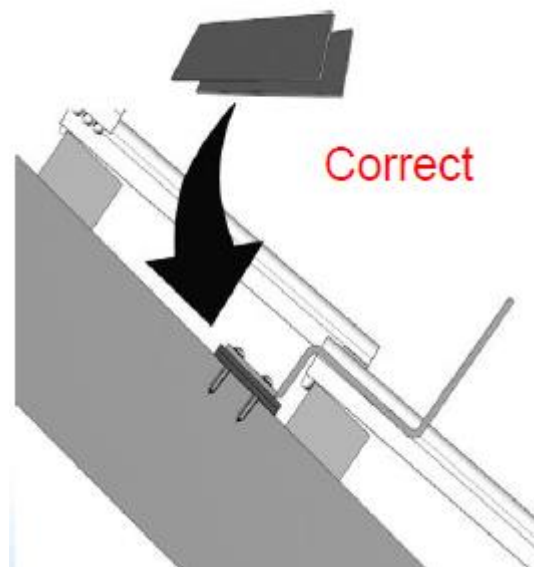
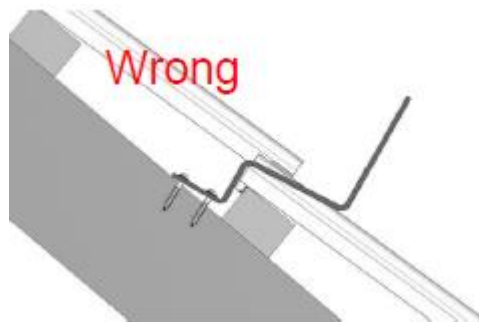
- 2) Install rails



3) Install panels



4. INSTALLATION CHECKS



END