

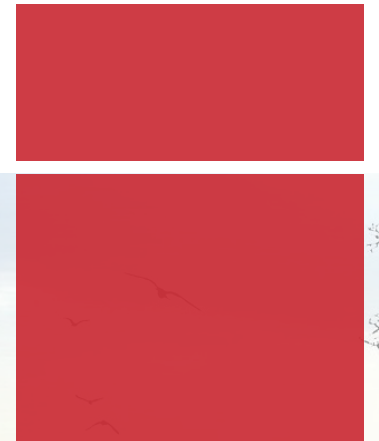
# ITS-50VD3<sub>pro</sub>

Heat Pump Water Heater

- Hotels
- Hostels
- Apartment Buildings
- SPA/Salon/Sauna
- Health Clubs
- Retirement Homes

**COP up to 4.96**

The highest level in the commercial hot water industry



# Key Components



### DC Motor

Dedicated speed module enhances COP and heating performance.



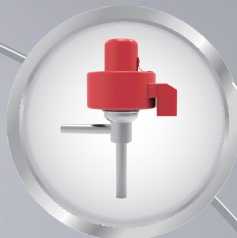
### Fan Blade

With better dynamic balance and reducing turbulent flow noise, heat pump work efficiency is greatly improved.



### EEV

Advanced EEV control logic ensures dedicated superheat management.



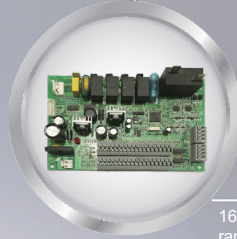
### 5 Inch Color Display

Multi-functioned display provides easy control.



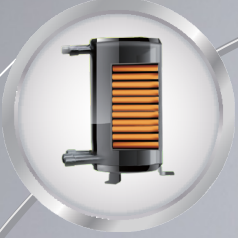
### Smart PCB

165-265V power-supply fluctuation range.



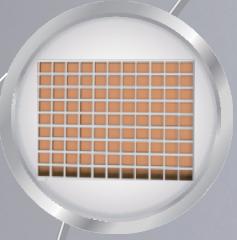
### Heat Exchanger

High efficiency tube in shell heat exchanger is with no welding points or danger of leakages & corrosions.



### Finned Heat Exchanger

Copper-aluminum finned heat exchanger is with 25% bigger heat exchanging capacity.



### Compressor

ZW scroll compressor is dedicated for heat pump water heater.



# ITS-50VD3<sub>pro</sub>



## High Efficiency

25% higher efficiency with  $\Phi 7$  mm evaporator & special coating for coastal cities.



## DTU remote monitoring

Connects to mobile network for remote monitoring and mobile app control.



## High COP of 4.96

The COP is as high as 4.9 which is even higher than the first class energy rating.



## Copeland ZW Compressor

Heat Pump dedicated R410A scroll compressor.



## Ultra-quiet Operation

Improved evaporator wind field design provides ultra-quiet operation in commercial buildings.



## Wide Application

Super-widely operation envelope for all climates hot water application.



## Specifications

Model	ITS-50VD3 <sub>pro</sub>	
Hot Water Capacity*	kW	50.0
Power Input*	kW	10.4
COP*	W/W	4.81
Hot Water Volume	L/h	1031
Hot Water Capacity**	kW	36.0
Power Input**	kW	10.1
COP**	W/W	3.56
Max. Power Input	kW	14.3
Max. Running Current	A	24.2
Power Supply	V/Ph/Hz	380~415V/3N~50Hz
Compressor Quantity	/	2
Compressor Type	/	Scroll
Compressor Brand	/	Copeland ZW Series Heat Pump Dedicated Compressor
Throttle Device	/	Electronic Expansion Valve
Fan Quantity	/	2
Circulation Water Pump	/	/
Fan Motor Input	W	200×2
Water Flow Volume	m <sup>3</sup> /h	8.3
Water Pressure Drop	kPa	110
Water Connection	inch	1.5
Noise	dB(A)	61
Air Volume	m <sup>3</sup> /h	5500×2
Air Discharge Type	/	Vertical
Max.Outlet Water Temp.	°C	60
Operation Range	°C	-15~43
Condenser	/	Patented Tube in Shell Heat Exchanger
Evaporator	/	Hydrophilic Aluminum Finned Heat Exchanger with Special Coating
Defrosting	/	by 4-Way Valve
Controller	/	Multi-function Controller
Display	/	5 inch Color Touch Display
Refrigerant	/	R410A
Cabinet	/	Eco-friendly Galvanized Metal
Net Weight	kg	350
Gross Weight	kg	400
Net Dimensions(L/W/H)	mm	1700/800/1735
Shipping Dimensions(L/W/H)	mm	1830/880/1900

Test Condition\*: ambient temperature 20°C/15°C, water circulation from 15°C to 55°C.

Test Condition\*\*: ambient temperature 7°C/6°C, water temp. (in/out): 40°C/45°C.

The data above is for reference only. For more specific data, please refer to the nameplate on the unit.